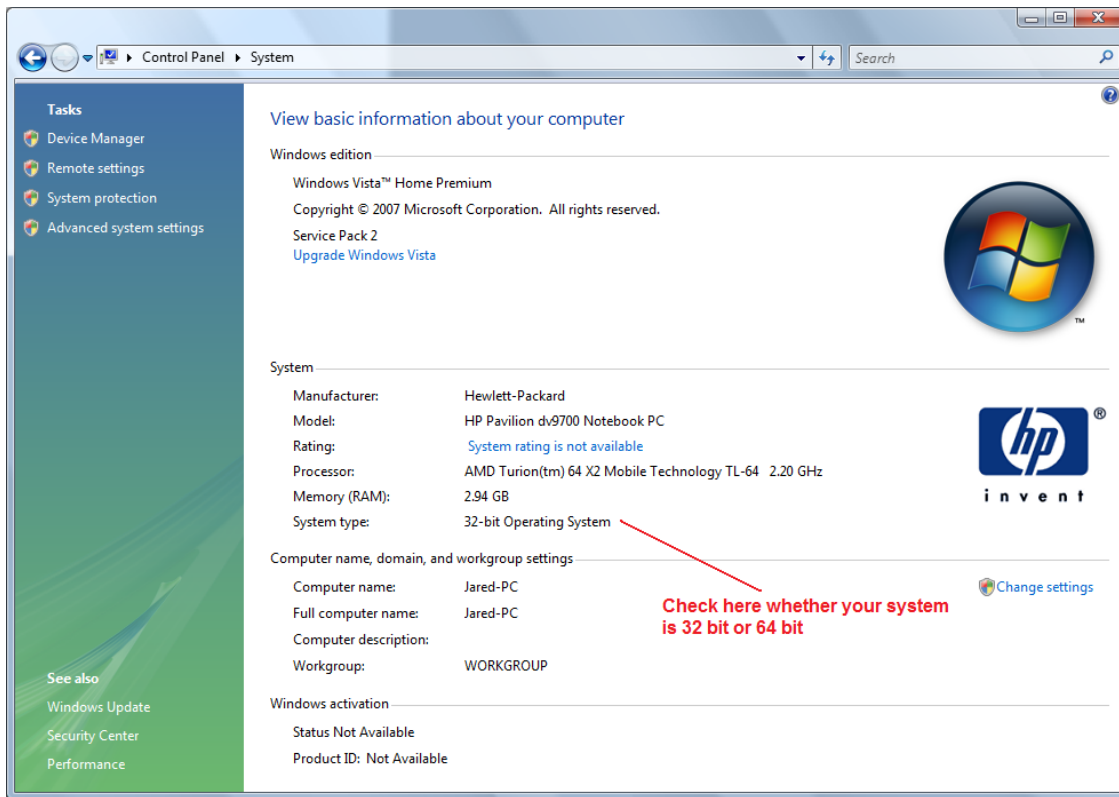


# How to Install Microsoft SQL 2008 successfully

- 1) Check whether you have a **32 bit or 64 bit** operating system by opening the **system tab** in your **control panel**.



- 2) Download the **relevant SQL installation file** from [this page](#)

- SQL Server 2008 Express is available for x86 and x64 systems. **SQL Server 2008 Express is not supported on IA64 systems.**
- [See SQL Server Books Online](#) for detailed information on installing and using SQL Server 2008 Express.
- If you have questions about SQL Server 2008 Express, visit the [SQL Server 2008 forums on MSDN](#).
- [Register](#) your personal copy of SQL Server 2008 Express.
- Building and shipping applications with SQL Server 2008 Express? Sign up for [free redistribution rights here](#).
- Help improve SQL Server 2008 Express by submitting bugs to [Microsoft Connect Feedback](#).

[↑ Top of page](#)

## Files in This Download

The links in this section correspond to separate files available in this download. Download the files most appropriate for you.

File Name:	File Size	
SQLEXPR_x64_ENU.exe	104.3 MB	<b>64 bit systems download this one</b> <a href="#">Download</a>
SQLEXPR_x86_ENU.exe	95.3 MB	<a href="#">Download</a>
SQLEXPR32_x86_ENU.exe	82.3 MB	<b>32 bit systems download this one</b> <a href="#">Download</a>

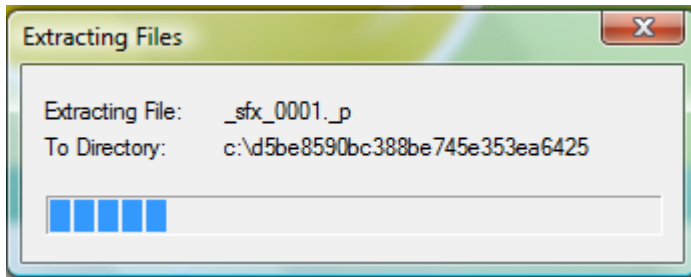
[↑ Top of page](#)

## Related Resources

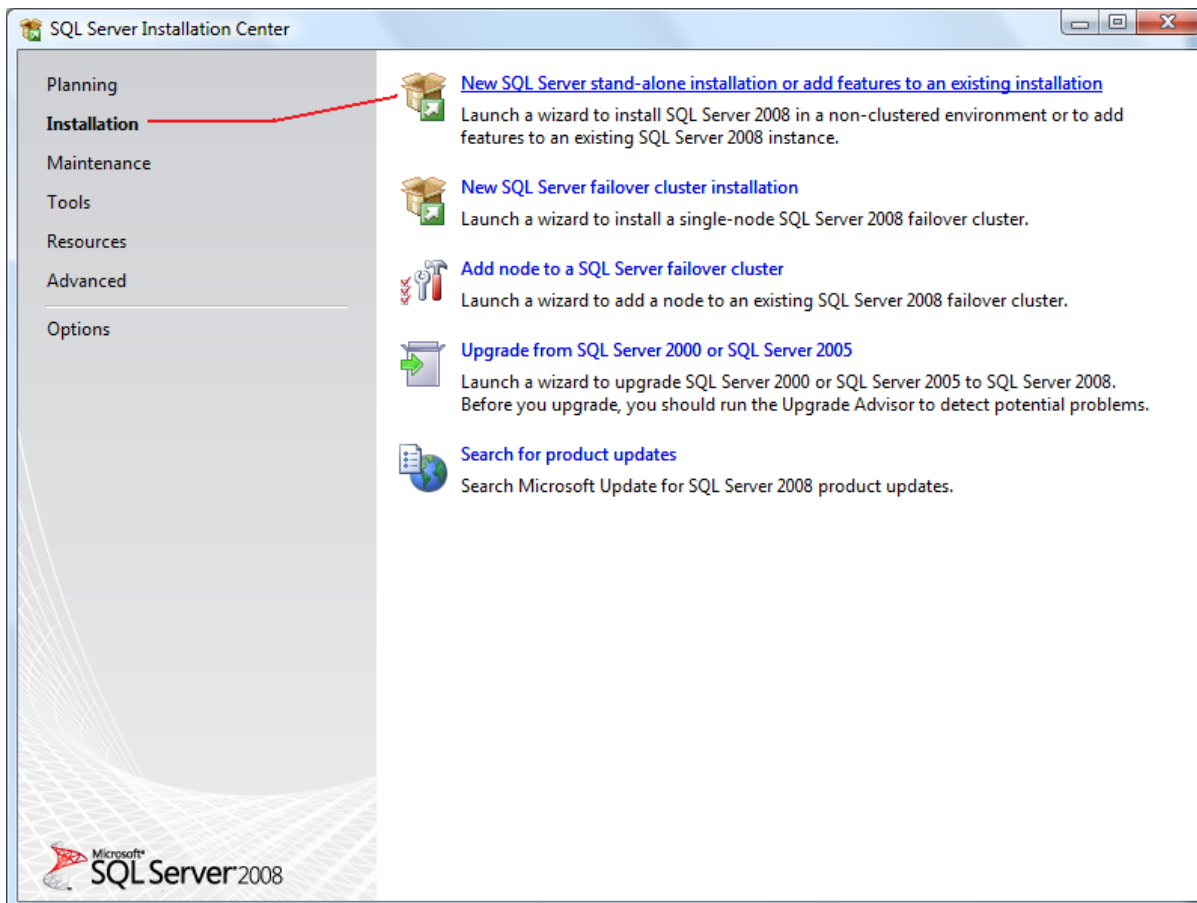
1. [Home page for Microsoft SQL Server](#)
2. [SQL Server Developer Center](#)
3. [Samples and Sample Databases](#)

[↑ Top of page](#)

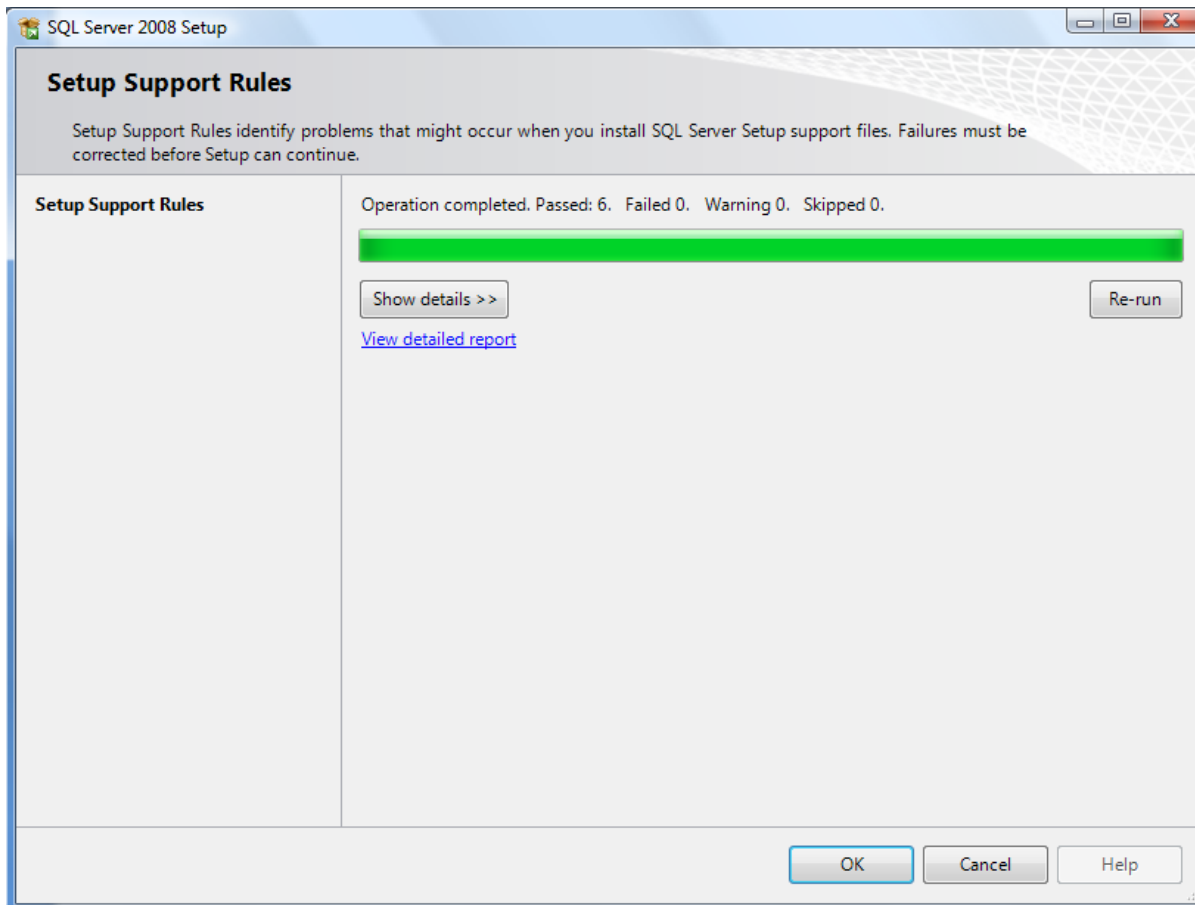
3) **Open** the downloaded **SQL installation file**, this can take a few mins to load



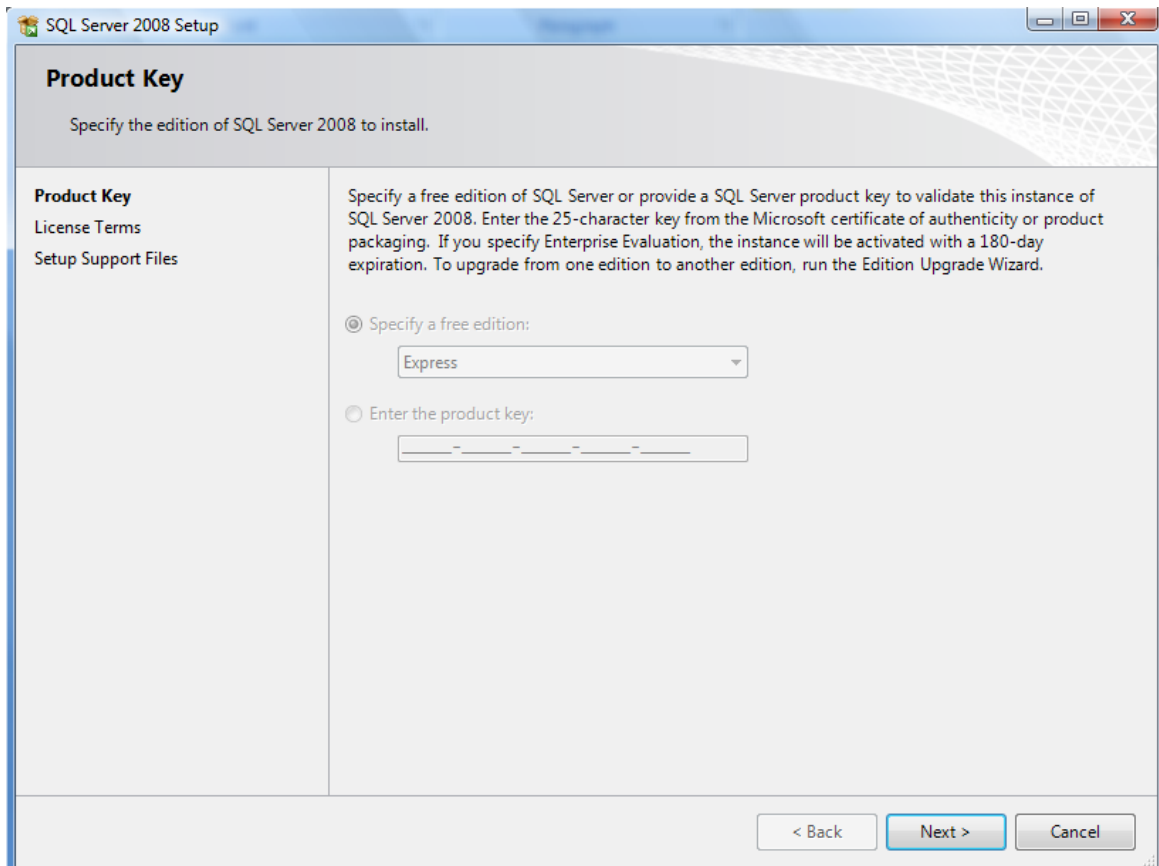
4) Click on the **installation tab**, then click on **New SQL Server stand-alone installation or add features to an existing installation**



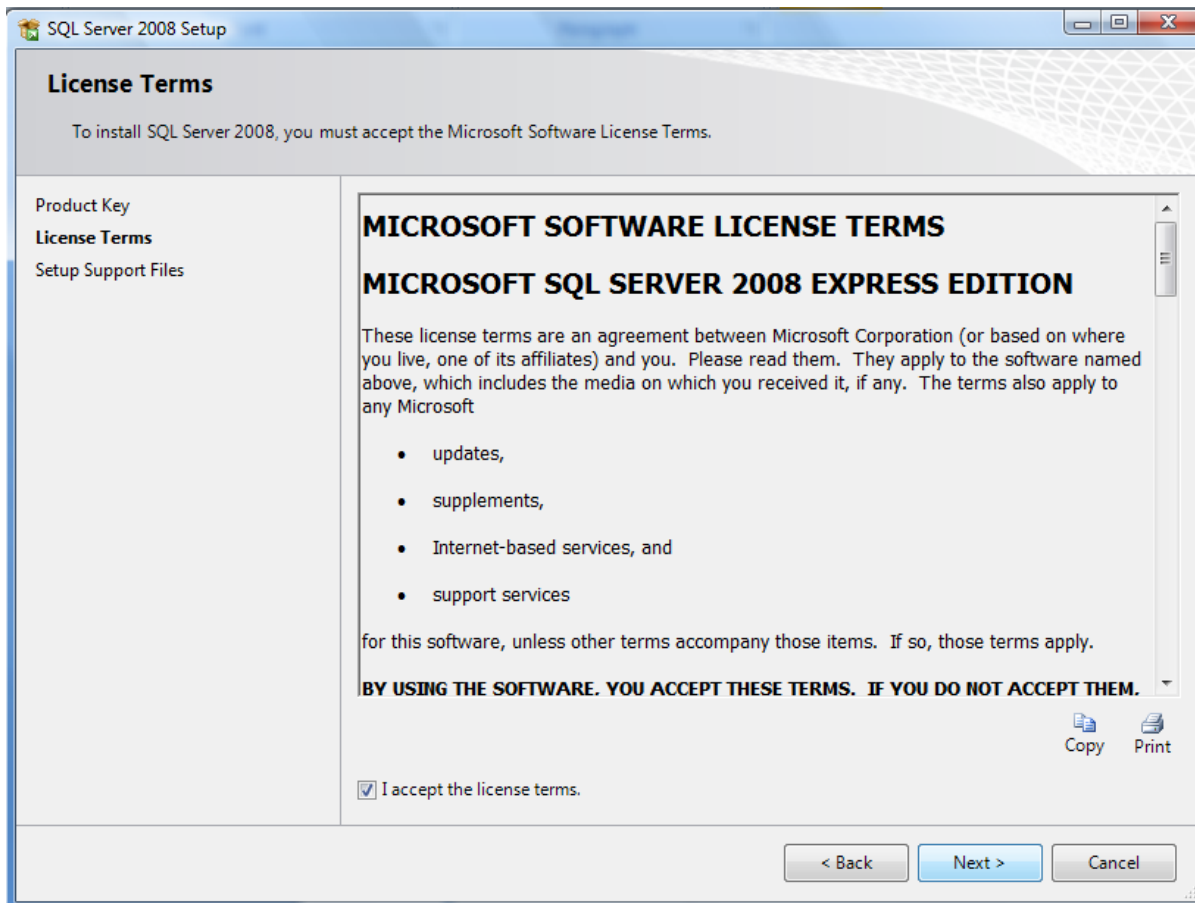
## 5) Click on **OK**



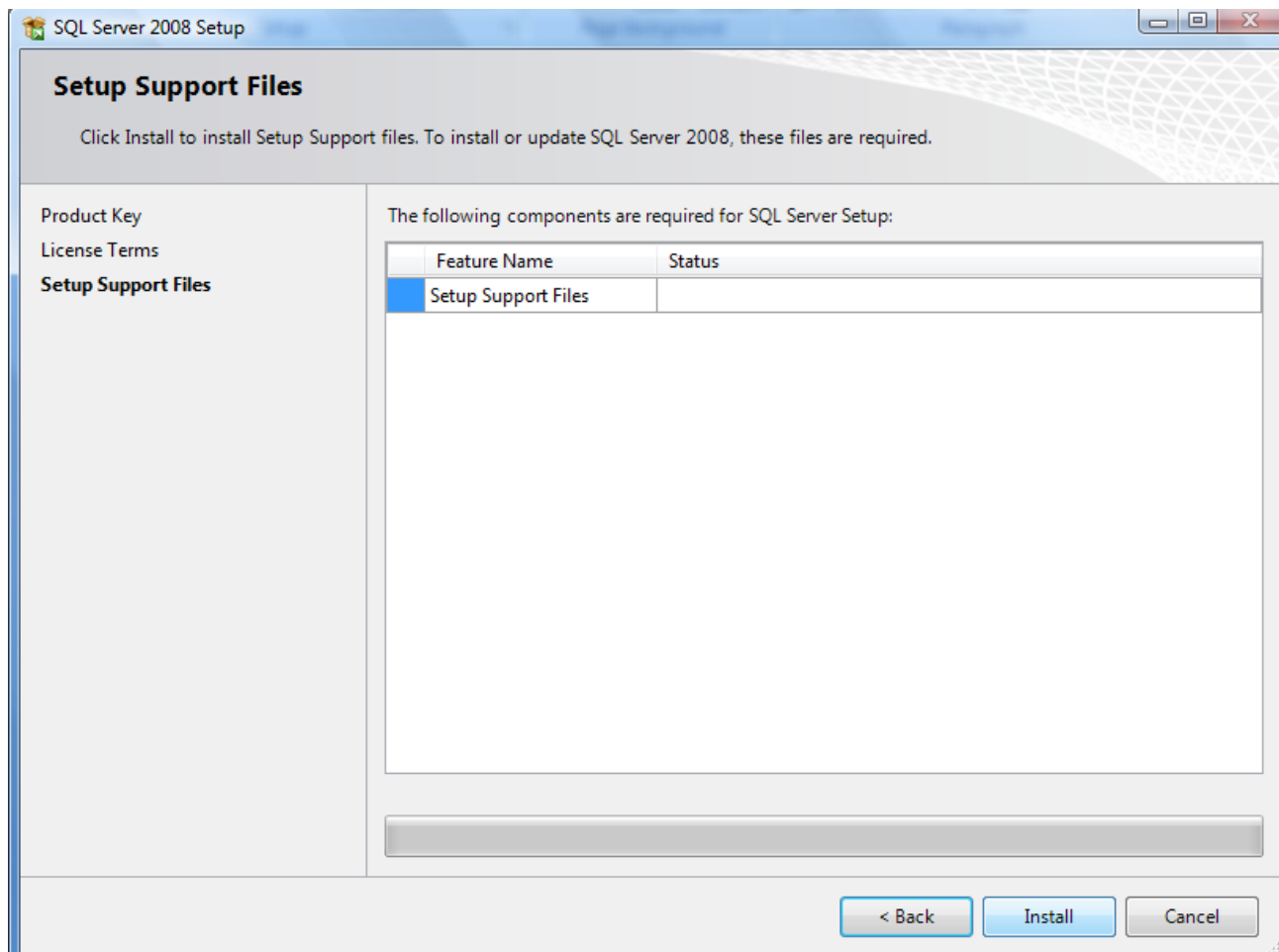
## 6) Click on **next**



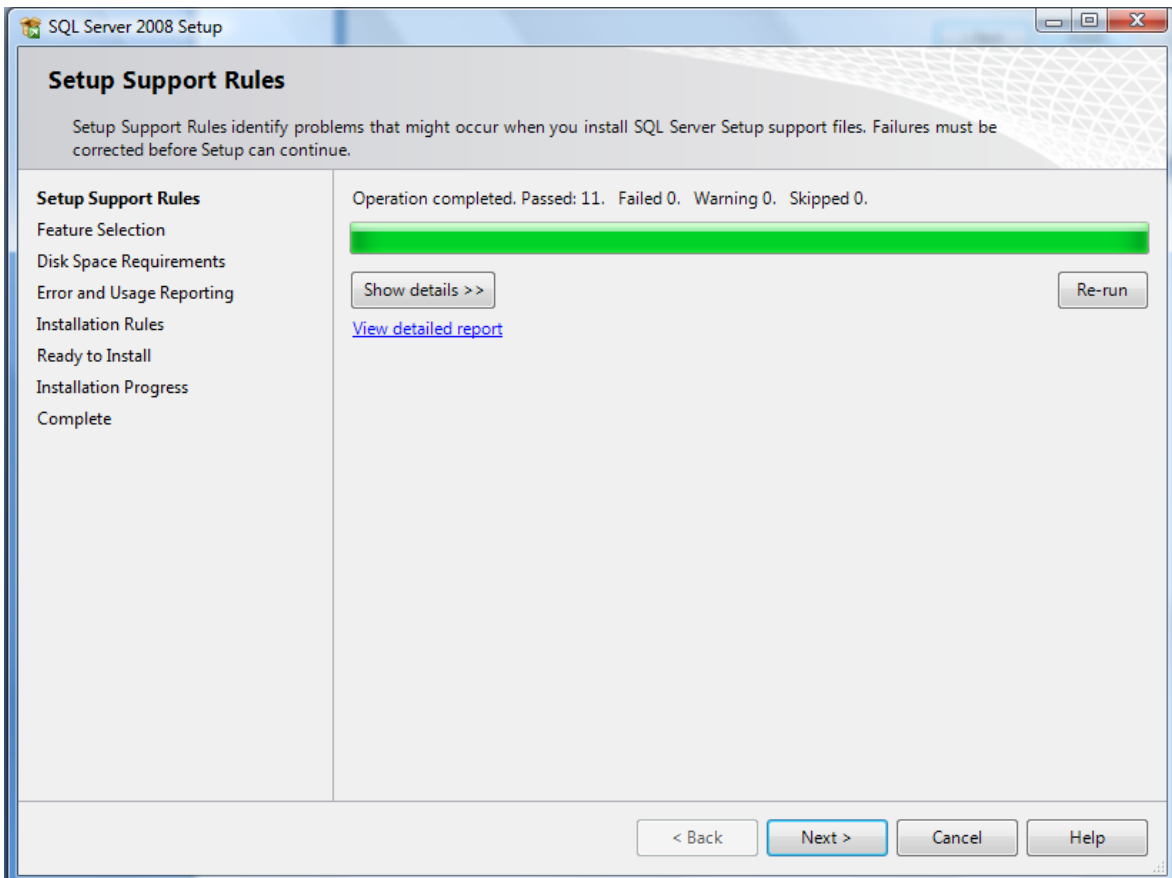
## 7) Click on agree to terms and then next



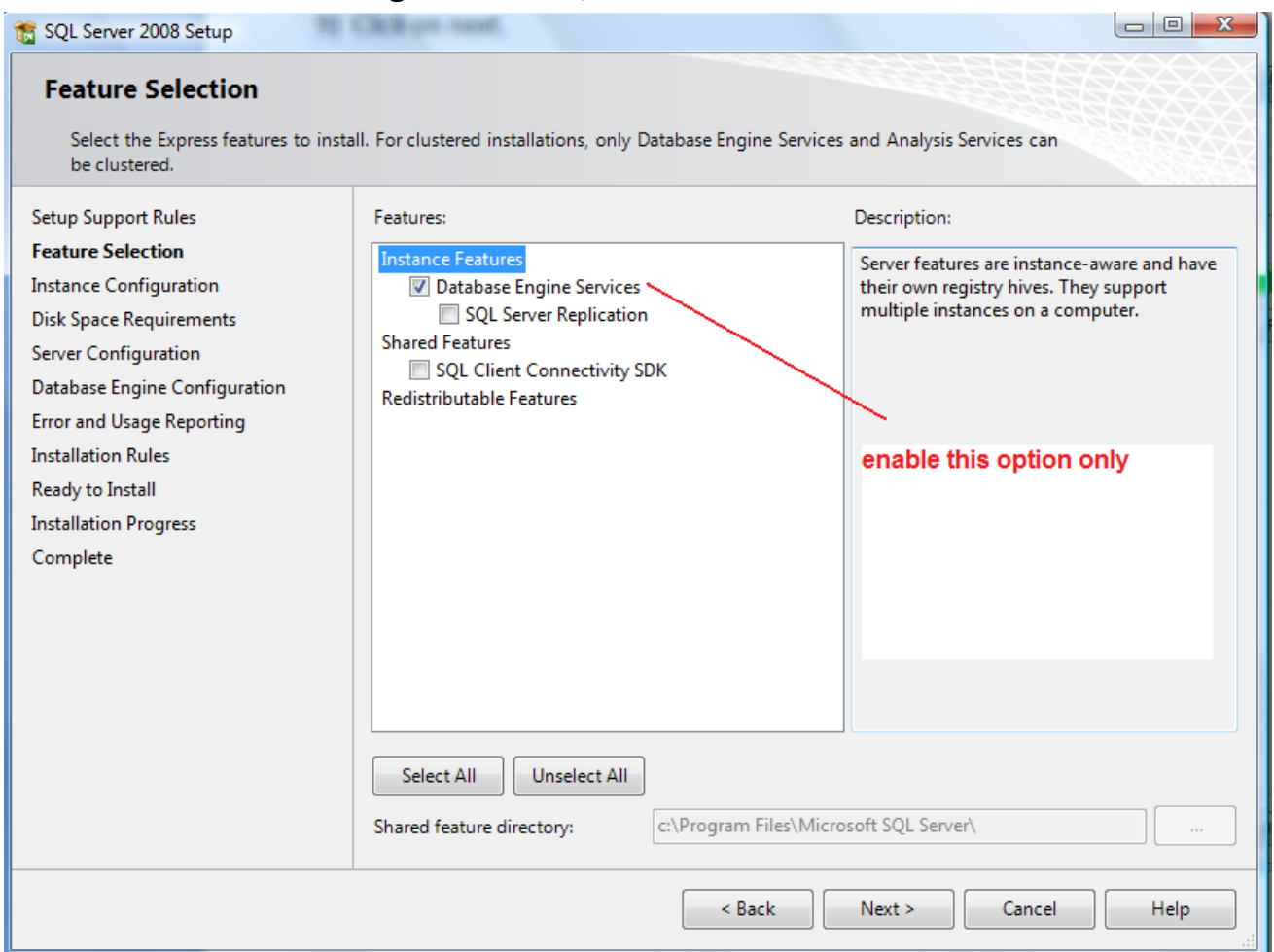
## 8) Click on Install



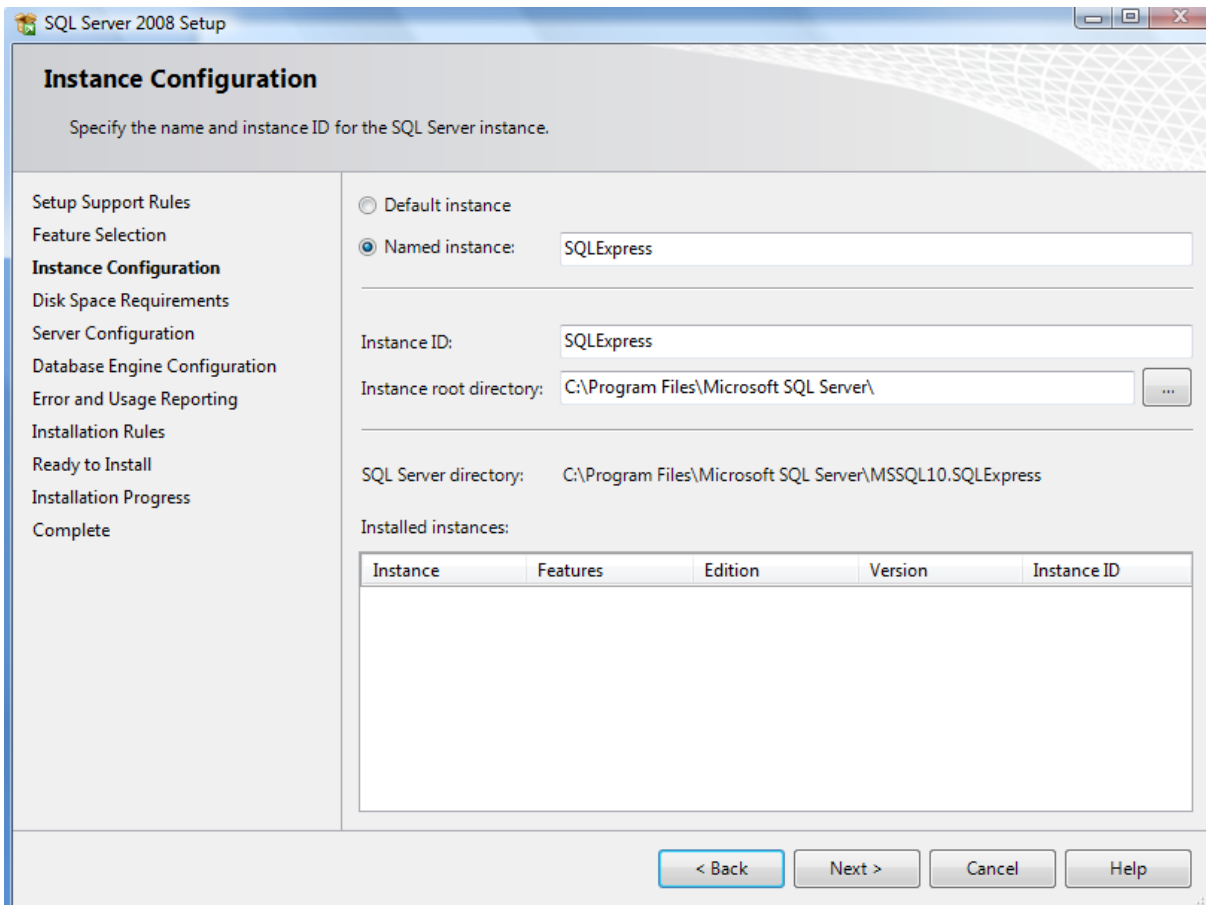
9) Click on **next**



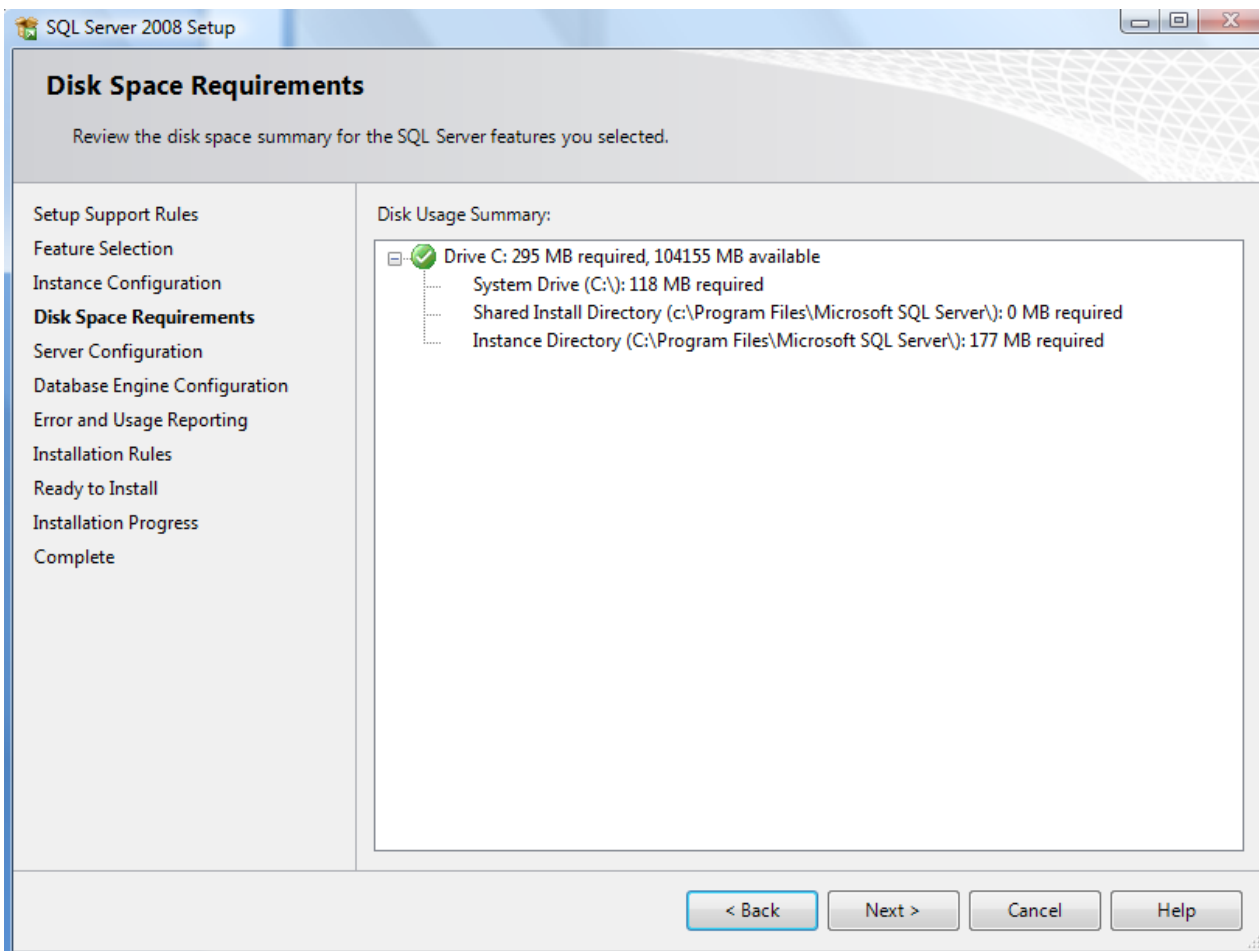
10) Enable **Database engine services**, then click on **next**



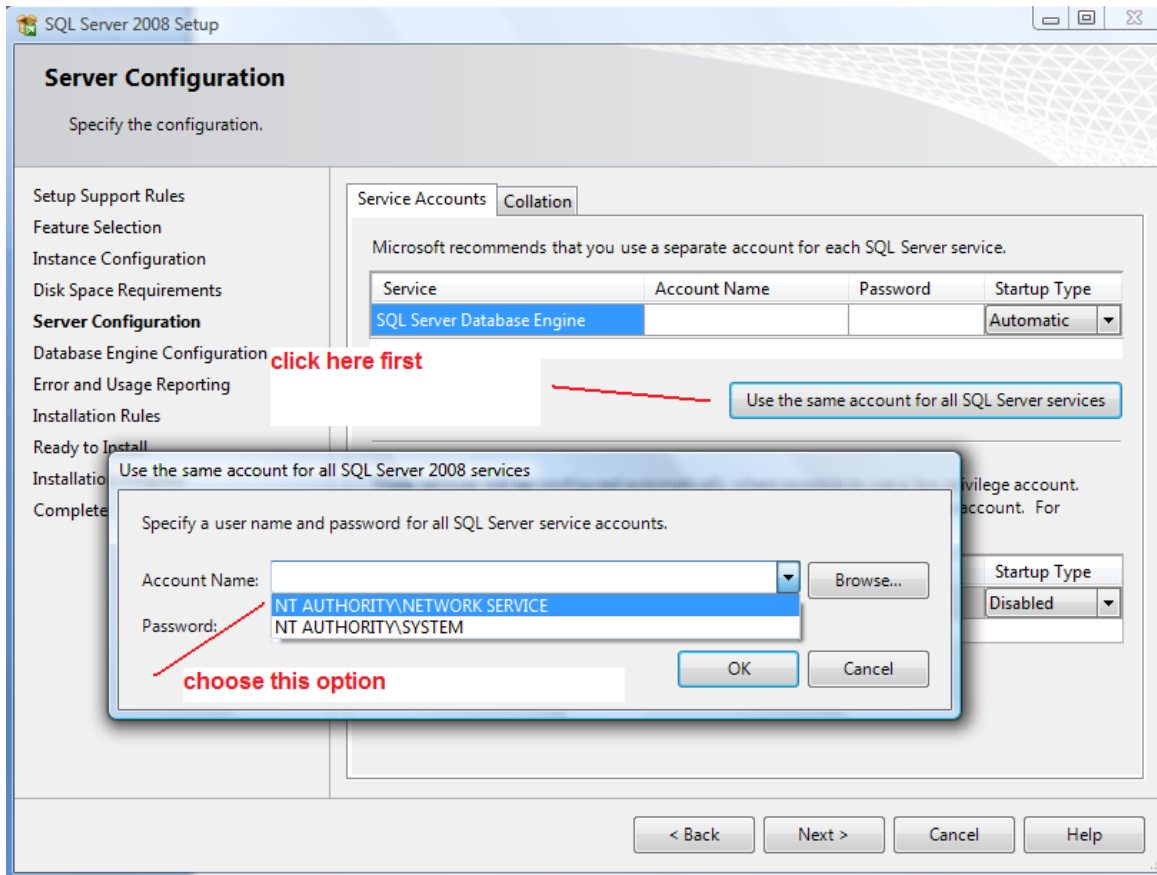
11) Click on **next**



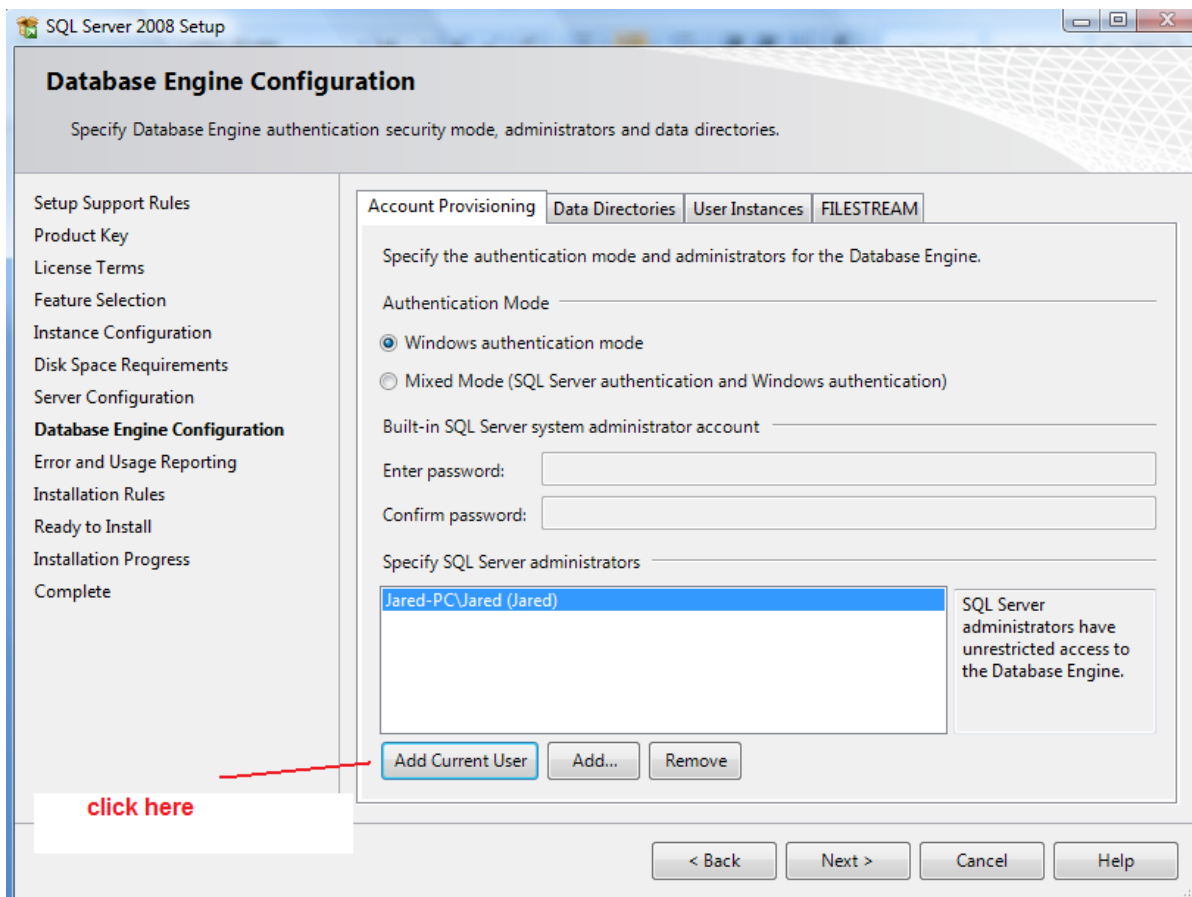
12) Click on **next**



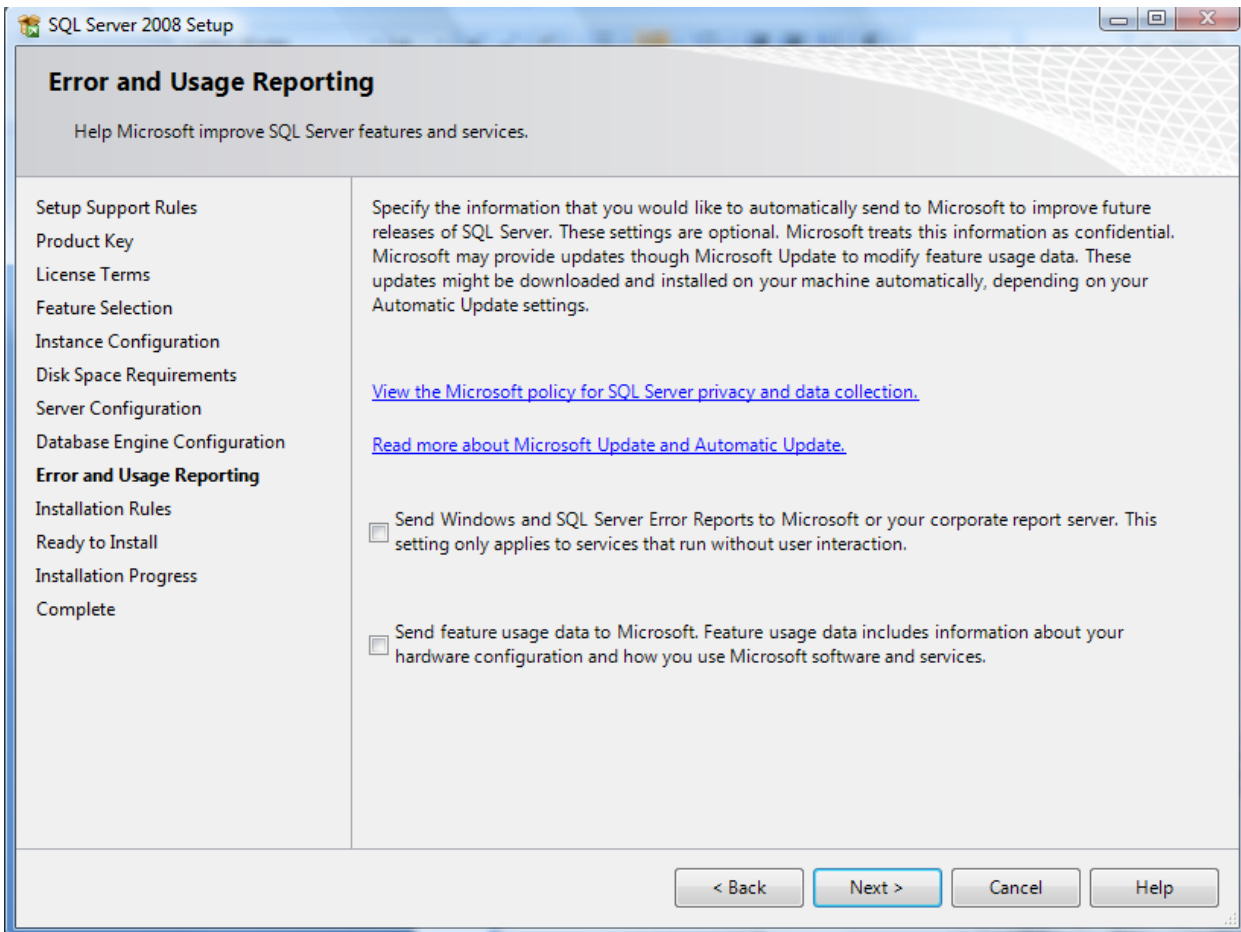
- 13) Click on **use same account for all services** and select the **network service option**, then click on **ok** then **next**



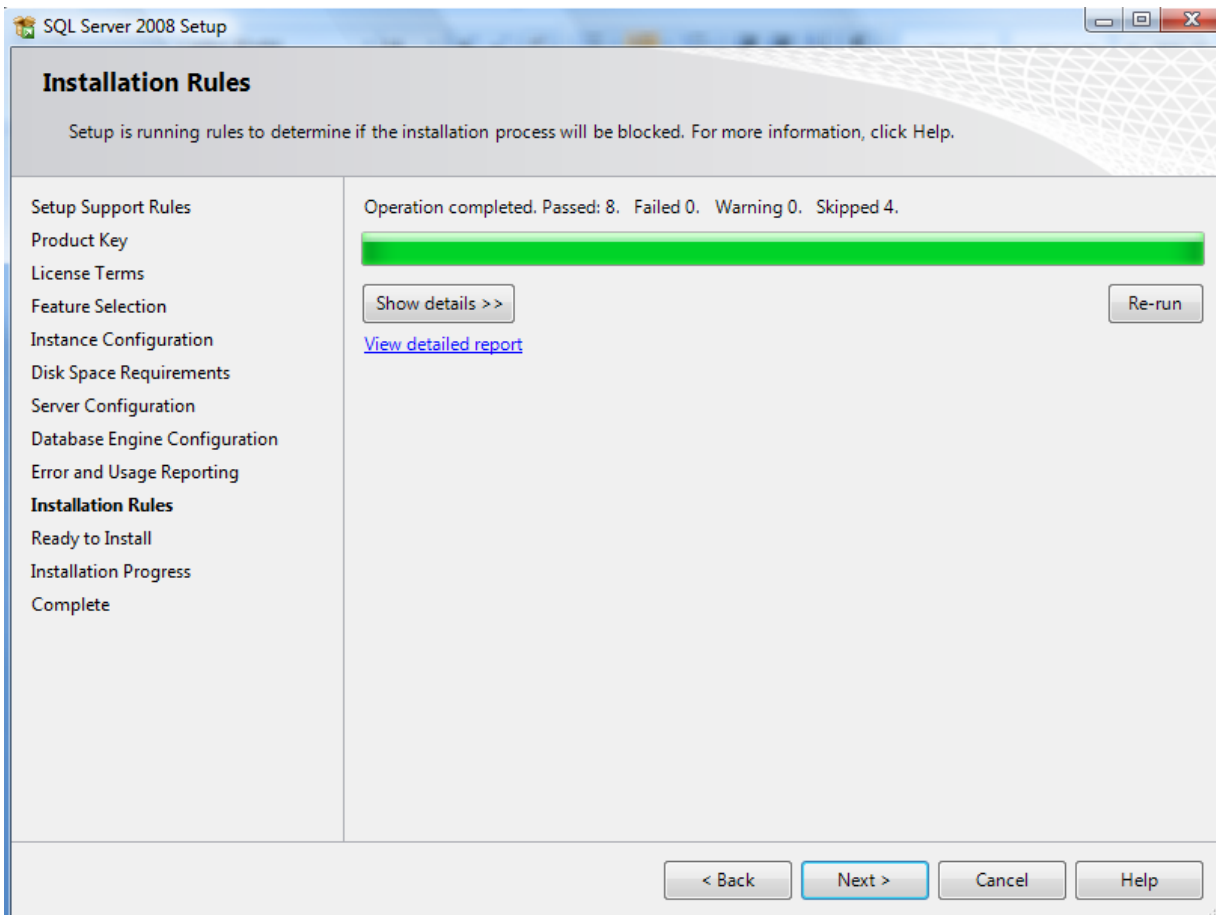
- 14) Click on **add current user**, wait for it to load, then click **next**



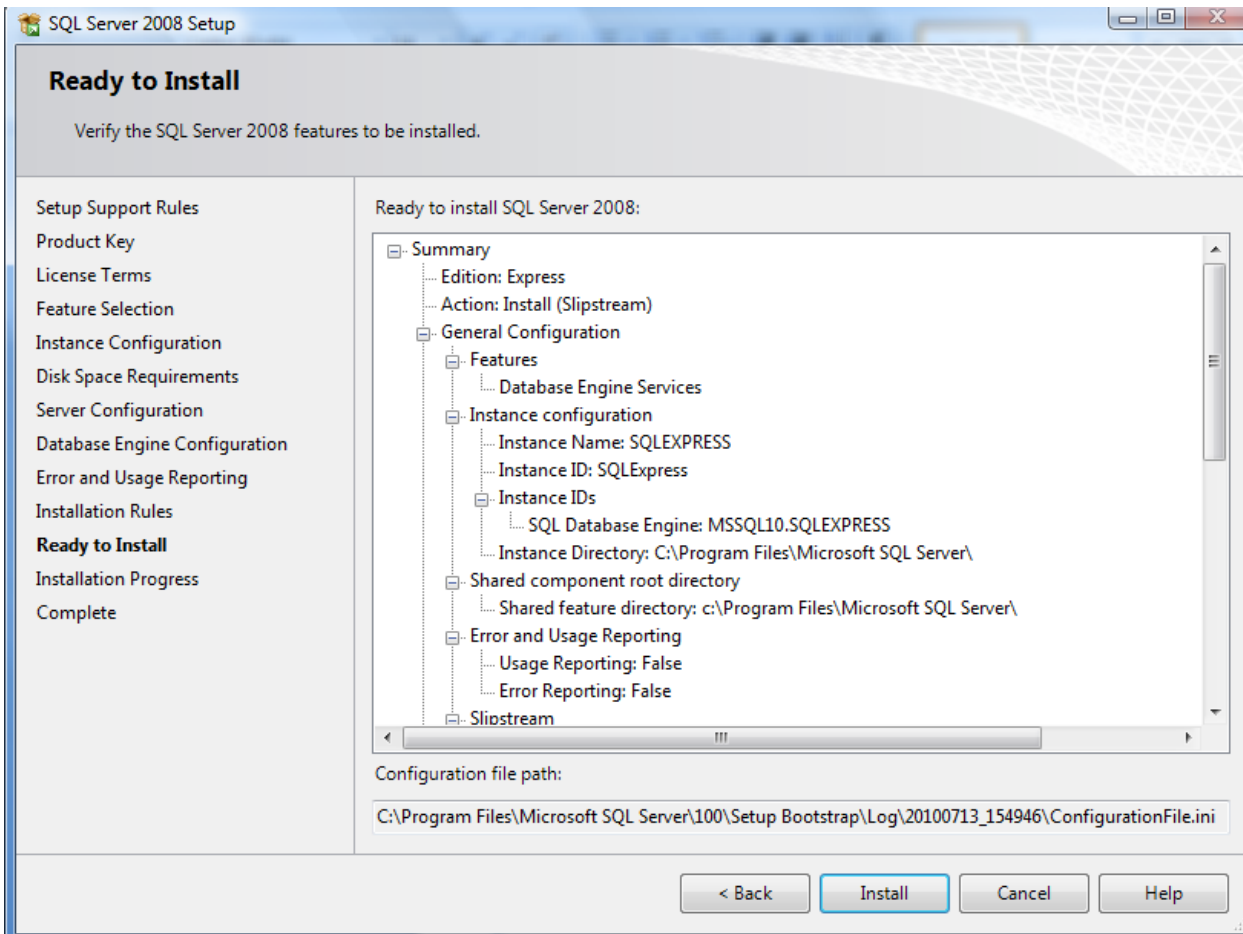
15) Click on **next**



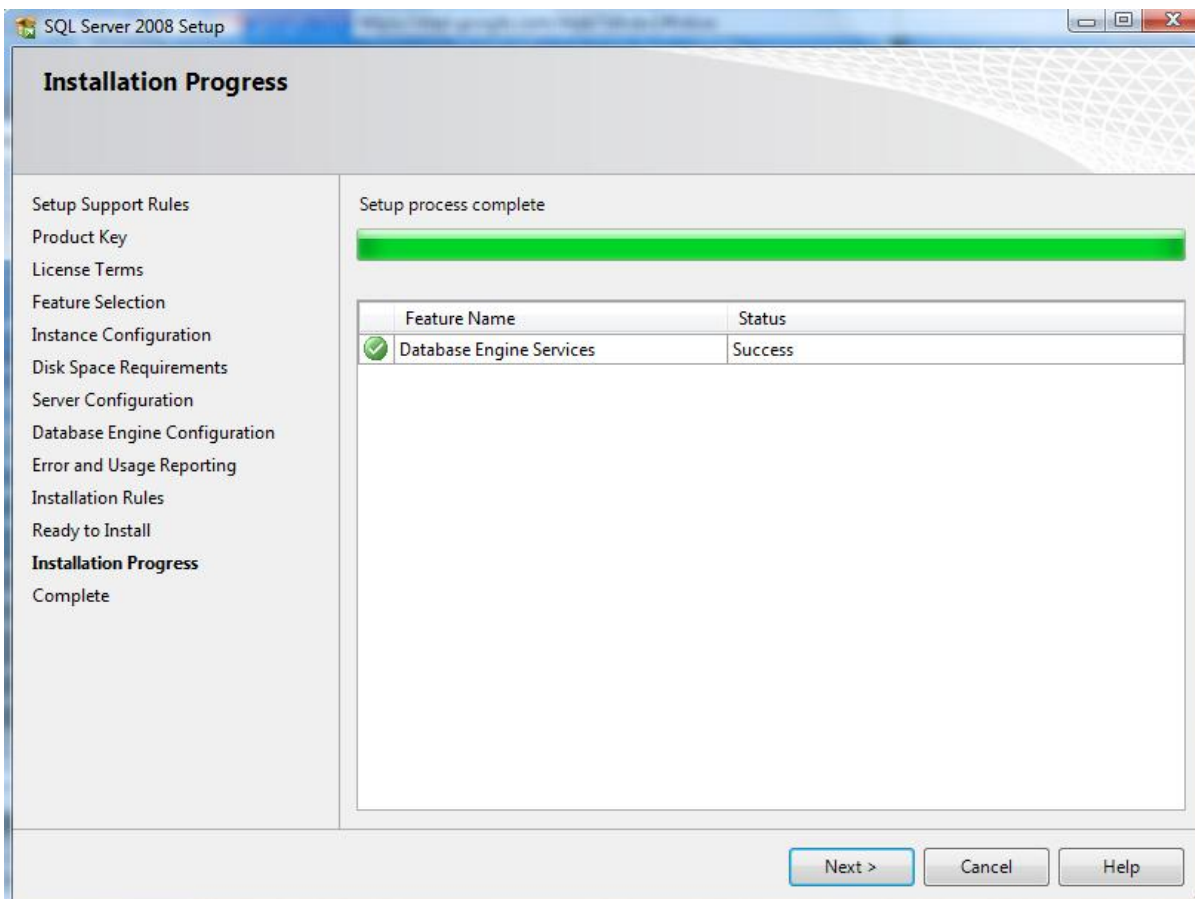
16) Click on **next**



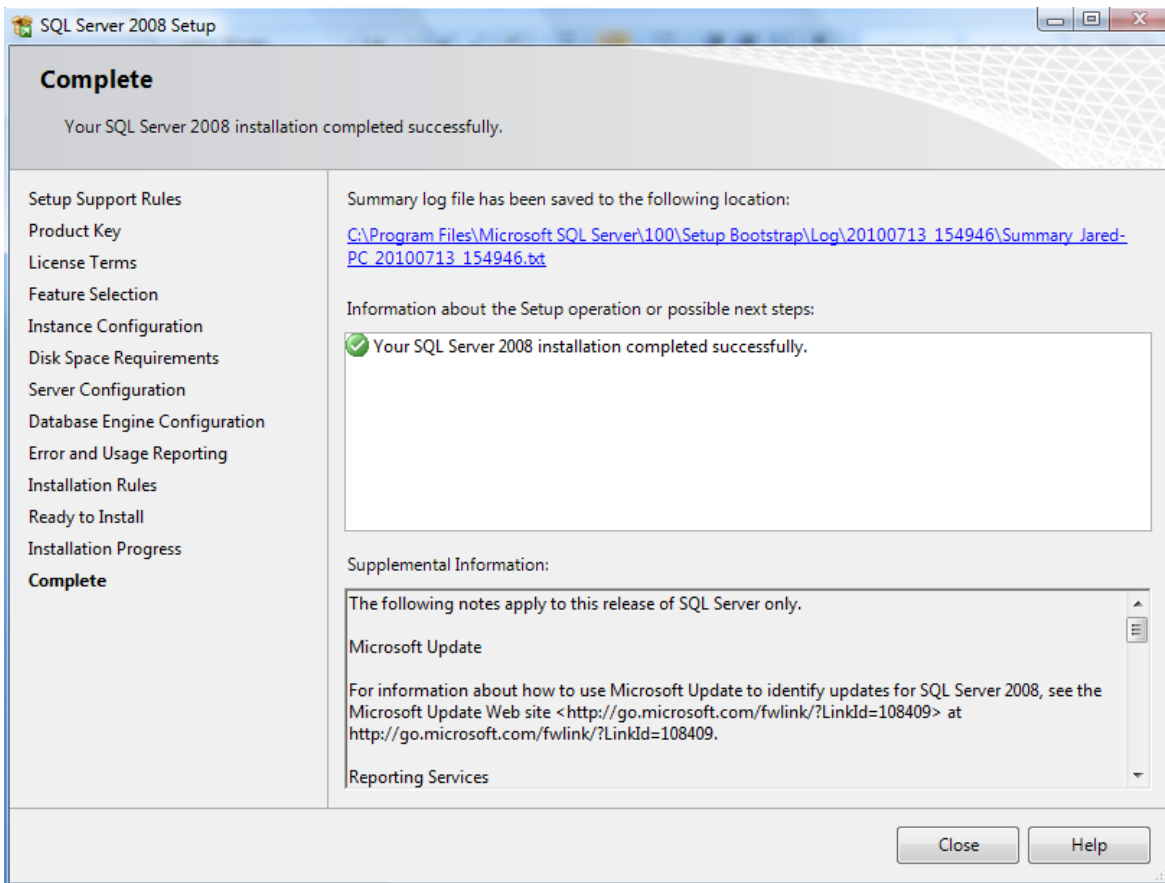
17) Click on **install**



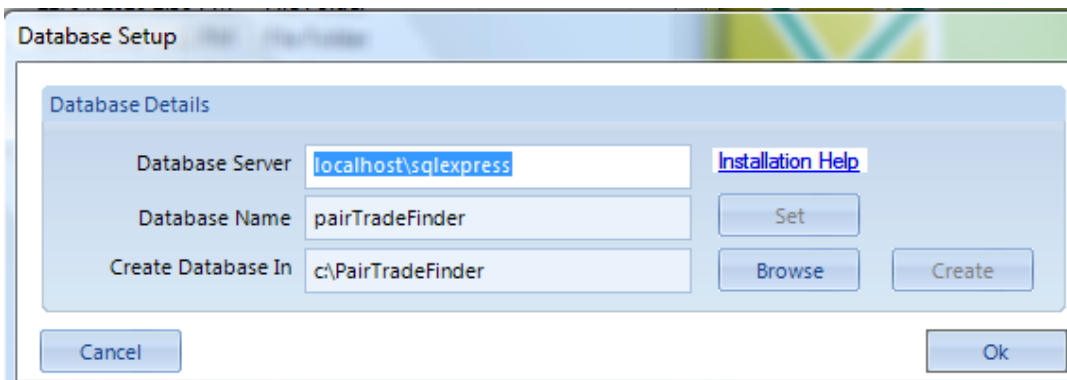
18) Click on **next**



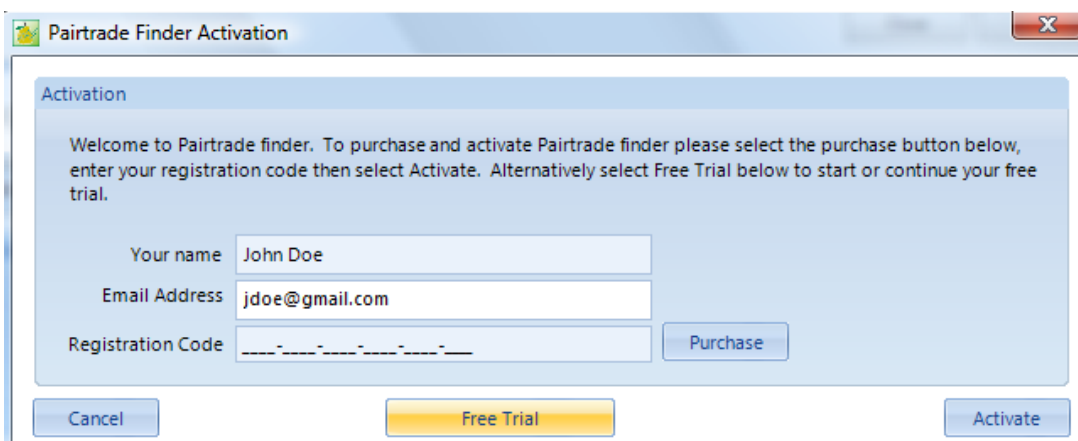
19) SQL should now be installed successfully, click **close**



20) Now **open Pairtrade Finder** from your desktop and click on **create**, then **ok**



21) Type in your **name** and **email**, then click on **free trial**



You have now successfully installed Pairtrade Finder on your machine. To use it again, simply click on the Pairtrade Finder icon on your desktop.

Please now refer to the [user manual](#) or our [website video](#) for instructions on how to start using the software.

If you have any questions please don't hesitate to [contact us](#) and we will help you immediately.

Best of luck in your trading!

Regards,

The Team at [www.PairTradeFinder.com](http://www.PairTradeFinder.com)



Finder  
**Pairtrade**  
Professional Stock Trading Software